



NETWORK STATEMENT FOR FREIGHT TERMINAL

2020



Fushë Kosovë March 2019

Modification table

Number	Date of entering into forcer	Reference number of decision	Modification in Chapter

Content

1. General information	3
2. Infrastructure in the Freight Terminal	9
3. Services provided	11
4. Charges	15
5. Appendixes	18

1 General information

1.1 Introduction

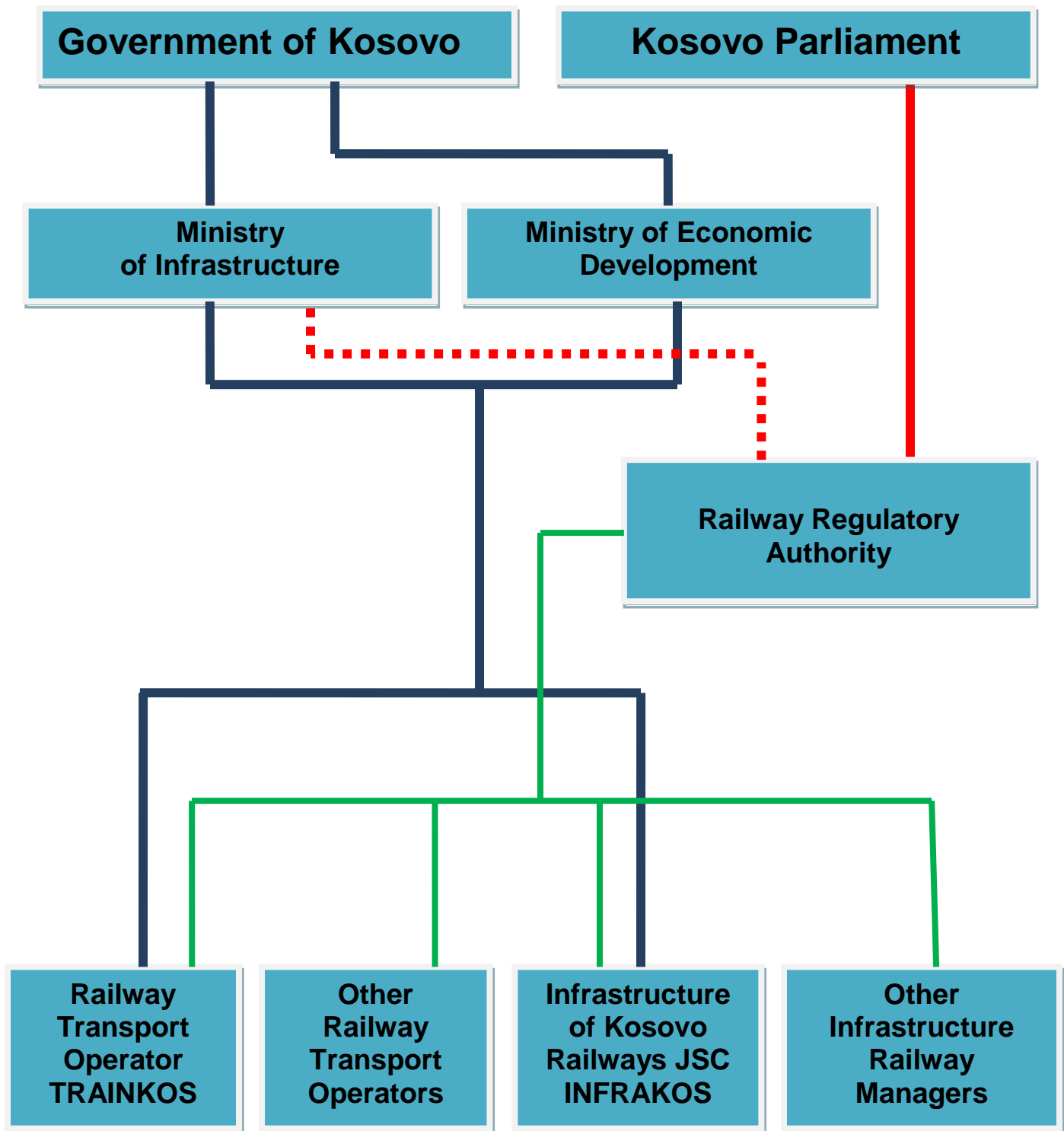
146 years ago, respectively on 1874 was built the first railway line in Kosovo in the direction Hani i Elezit – Fushe Kosove – Mitrovicë. This was the beginning of railway network spreading throughout Kosovo, as important for transport of freight and passengers, also important for Economical development and connection of Kosovo with countries in the region. In 1931 continued the construction of this line in relation Mitrovicë – Leshak, in 1934 the one Fushe Kosove – Prishtinë, in 1936 Fushe Kosove – Peje, in 1949 Prishtinë – Podujevë – Livadhi and in 1963 Kline – Prizren. Therefore today the rail network covers the entire Kosovo territory with a length of 333,951 km open railway line, with a length of 105,784 km in stations and 103,4 km industrial lines. The network is connected through Leshak and Podujevë in north and east to Republic of Serbia, through Hani i Elezit, in south with Macedonia.

Based on the Law on Railways in Republic of Kosovo, the Infrastructure management and transport operations have been fully unbundled. Based on the Law on Public Enterprises Infrastructure of Kosovo Railways JSC – INFRAKOS is a publicly owned enterprise and all shares are in ownership of Kosovo Government, administered by the Ministry of Economical Development.

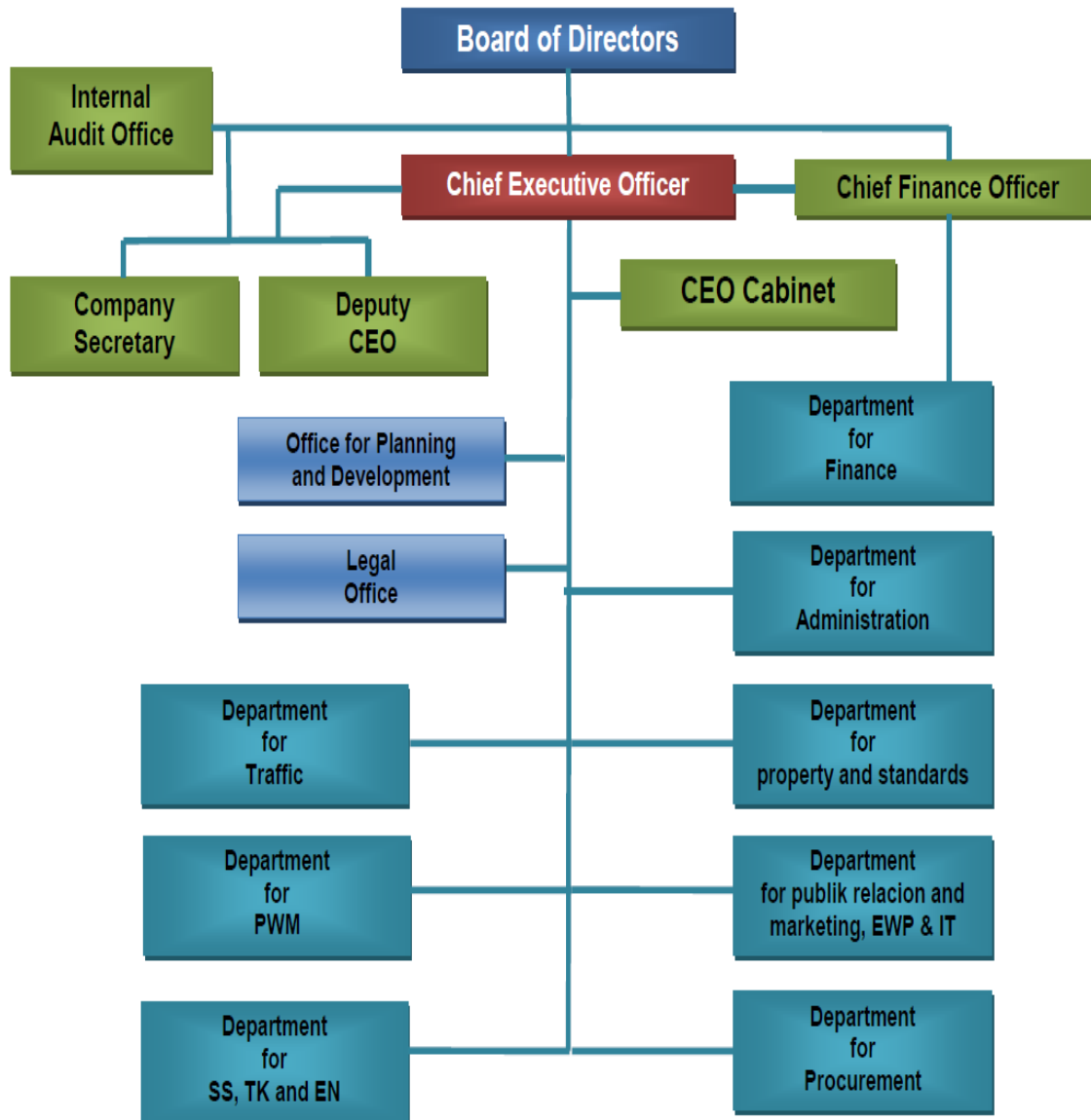
The existing railway infrastructure network in Kosovo is presented in the below figure:



Below is presented the organization structure of railway sector in Kosovo as per Law on Railways:



Kosovo Railways Infrastructure JSC, shortly INFRAKOS based on current organization an the Law in force is responsible for maintenance and operations with railway infrastructure. Organizational structure of sector is presented in the following organizational chart:



1.2 Purpose

Based on the existing law it is foreseen that the access to railway network and freight terminal shall be given to all railway undertakings in a non-discriminatory and equitable manner the purpose of compilation of network statement for freight terminal is that all the railway undertakings get acquainted with the existing situation of freight terminal in Miradi and the conditions for use of this terminal.

1.3. Legal basis

Railway undertakings during their transport performance WITHIN THE Freight Terminal in Miradi shall comply with all national legal acts and sub-acts of Kosovo, including Law on Railways in Kosovo No. 04 / L – 063, such as internal regulations and instructions of the Infrastructure Manager – INFRAKOS.

1.4. Legal status

1.4.1. General notes

Infrastructure Manager of Kosovo Railways JSC - INFRAKOS, on the basis of the Law for Railways of Kosovo No. 04/L-063, and based on Chapter 13, Annex II of Directive 2012/34/EU is obliged to prepare and publish the railway Network Statement on Freight Terminal of Kosovo Railways Infrastructure JSC.

The Infrastructure manager of Kosovo Railways JSC is obliged to update regularly the railway Network Statement for Freight Terminal, and to modify it as necessary. Network Statement of freight Terminal shall be published at latest four months prior to the final date for submission of request for allocation of infrastructure capacities, prior to compilation of new annual time table.

1.4.2 Responsibility

This Network Statement on Freight Terminal is compiled on the basis of information acquainted on date 01.03.2019. INFRAKOS cannot be held liable for damage caused by printing errors in the Network Statement on Freight Terminal.

In case of non-compliance of the Network Statement on Freight Terminal with Laws in force, valid are laws applicable in Kosovo. This Network Statement on Freight Terminal has been drafted based on applicable laws in Kosovo. All regulations and technical documents that shall enter in force after publishing of this Network Statement should be applied and considered during interpretation of Network Statement.

Network Statement on Freight Terminal is published in Albanian, Serbian and English as well. In case of non-harmonization of Albanian, Serbian and English versions, the version in Albanian language prevails.

1.4.3. Appeals procedure

Railway transports undertakings can appeal to the Railway Regulatory Authority (RRA), respectively Department for Market Regulation as the appeal body for the railway market, if they believe that they have been unfairly treated, discriminated against or are in any other way aggrieved, and in particular against decisions adopted by INFRAKOS, with respect to:

- the network statement on Freight Terminal, and the criteria contained within it;
- the charging scheme for using the railway terminal;
- the level or structure of infrastructure fees which it is, or may be, required to pay;
- arrangements for access to railway terminal;
- arrangements for access to and charging for services.

1.5 Network Statement Structure

Structure of Network Statement includes:

1. General Information	Contains objectives of the NS on Freight Terminal
2. Infrastructure of the terminal	Contains description of railway infrastructure for Freight Terminal in Miradi
3. Services	Contains description of services offered by INFRAKOS.
4. Charges	Contains description of calculation methods of charges for services on freight terminal

1.6 Validity duration and method of update

1.6.1 Validity duration

Validity duration of the Network Statement for Freight Terminal in Miradi is connected to the annual timetable. This Network Statement will be valid for Timetable Schedule for 2019 (from 15.12.2019 - 12.12.2020), due to specific existing conditions from the date of approval until the new Timetable Schedule for year 2020.

Infrastructure manager is obliged to compile and publish the Network Statement not later than four months prior to deadline for application of infrastructure capacities allocation.

1.6.2 Update method

Infrastructure manager, through website www.infrakos.com shall publish changes and eventual complements of this Network Statement for the Freight Terminal in Miradi.

1.7 Publishing

Network Statement is published in written form and electronically on website www.infrakos.com. Network Statement for the Freight Terminal in Miradi is published in Albanian, Serbian and English language at the same time.

1.8 Contacts

Contacts within INFRAKOS in regards to information about for the Freight Terminal in Miradi can be received at:

INFRAKOS
Traffic department
Mr. Sabit Thaqi
Tel. +383 38 550 550 132
Mob. +383 44 222 137
Email: sabit.thaqi@kosovorailway.com



2. Infrastructure in the Freight Terminal

2.1. Introduction

The term "freight terminal" in the rail network operated by INFRAKOS means all open railway stations for the reception and dispatch of goods in which loading and unloading of goods is carried out.

For this purpose we distinguish:

- Stations (conventional terminals); and
- Terminals for intermodal transports.

In most INFRAKOS railway stations, there are rails for receiving and dispatching of freight trains and platforms for loading / unloading of goods. Therefore, in these stations it can be done without any problem to load and unload different goods for the needs of customers and all of these platforms make it possible to access trucks for freight transport.

The Freight Terminal at Miradi was built in September 2004. This terminal is the intermodal terminal through which the loading of containers and conventional goods is carried out. The terminal is located opposite the Miradi railway station and it is connected to this station via the thirteenth track.

The above was said that the Freight Terminal is connected to the Miradi Railway Station, which at the same time serves as the main station for composition of the freight trains. The station is completed with sufficient number of tracks for composition and decomposition of the freight trains.

You can get detailed information on the maximum train lengths for composition of trains in Miradi station at this address:

INFRAKOS
Mr. Sabit Thaçi
Traffic Department
Fushë Kosovë
Tel. +383 38 550 550 132
Mob. +383 44 222 137
e-mail: sabit.thaqi@kosovorailway.com

2.2 Position of the Freight Terminal at Miradi

The Railway **Terminal** in Miradi extends to the latitude 42 ° 36'42.54 north and Longitude 21 ° 4'46.93" east.

The INFRAKOS rail freight terminal is located at the railway station Miradi, in kilometer 251.540 of the railway route 10 connecting Serbia with Kosovo and Macedonia, respectively about 2 km south of the central railway station of Fushë Kosovë, or about 10 km away from the capital city of Kosovo Pristina. Except with the railway route 10, the freight terminal in Miradi is also connected with the highway Ibrahim Rugova (R 7), which connects Kosovo with Albania and in the near future also with Serbia, respectively M 9 road connecting Pristina with the city of Peja.

The map of the Miradi Rail Freight Terminal is presented in Appendix no. 1 of this Network Statement.

2.3 Terminal Assets

The Miradi Freight Terminal has the following assets:

- The surface of the terminal for operation of containers mobile crane and other goods is 5250 m². This space is asphalted and can be placed containers, other goods and trucks for loading / unloading of goods;
- 1000 m² secured parking with fens and guard;
- Mobile crane with load capacity up to 40 tons for containers and with the possibility of raising to level 5 (one to one - up to 5 floors);
- Forklift for unloading / loading pallets up to 2 tons;
- Three hand forklifts for pallet maneuvering in wagons / trucks;
- 16 instantaneous connection of freezer containers;
- Fuel transfer center in co-investment with "Bis Oil Team" which enables 4 wagons for immediate discharge from tanker wagons in the road tankers;
- Covered warehouses for loading the goods on a surface of 120 m², or (40 m x 3 m).



3. Services provided in the Freight Terminal in Miradi

3.1 Introduction

The Freight Terminal at Miradi Railway Station, which is owned by Kosovo Railway Infrastructure JSC - INFRAKOS deals with the loading / unloading of freight and containers for the needs of customers who transport by Rail. Provision of services to the terminal of goods for all customers is done in a regular, secure, transparent and non-discriminatory manner.

The services offered at the Miradi Terminal are as follows:

- Loading and unloading of containers of 20 and 40 foot and box containers;
- Loading and unloading of conventional goods, with pallets and without pallets;
- Offering an energetic service for refrigerator containers;
- The possibility of customs clearance of goods and other custom formalities;
- Uninterrupted security of goods within the terminal;
- Fuel discharges from tank wagons to tank road vehicles;
- Parking for vehicles and trucks;
- Other services as per previous agreements.

3.2 Requirements for terminal services

Requirements for terminal services must contain the information that is appropriate for their implementation and should be in written form or by phone.

Requirements shall be sent by phone and email to the following address:

INFRAKOS
Mr. Sabit Thaçi
Traffic Department
Fushë Kosovë
Tel. +383 38 550 550 132
Mob. +383 44 222 137
e-mail: sabit.thaqi@kosovorailway.com

3.3 Responsibility for damage of goods

The customer is responsible for the consequences of damage to goods or cargo, due to packaging and unlawful cargo of goods loaded in the container and wagon. The customer is also responsible for ensuring that the containers and conventional goods loaded comply with all valid regulations and standards for safe transport.

When INFRAKOS damages goods, then the company carries the responsibility.

3.4 Assessment of damages caused

The assessment of damages caused to the container or damage to the goods is done by the joint commission, which is established by decision and consent of both parties in certain cases when there is damage to the goods. The INFRAKOS representative is always chaired by the Commission for assessing the damage caused. The cause of the damage according to this commission carries the responsibility for compensation.

3.5 Los and conveyance of goods

For the loss and conveyance of goods during the stay of the goods at the terminal, the responsible is the terminal.

3.6 Documents

The documents that must be completed by the bill collector as proof of the fulfillment of obligations to INFRAKOS and the customs service are DUD and the international CIM consignment note. The bill collector is obliged to complete a copy from the calculator and copy it to the financial documents.

Based on these documents the terminal starts performing the services requested by the customer

3.7 Storage of containers and conventional goods

The terminal has obligation to take care that conventional goods and containers are stored in appropriate spaces for manipulation with the equipment available to the terminal. During the entire warehousing period, the terminal is responsible for any damage to the containers or goods, and if it comes to them, it is obliged to cover it at its own expense, but not in case of unforeseen circumstances (force majeure), natural disasters, war, etc.

3.8 Force majeure (unpredictable cases)

If the conditions are unpredictable and do not depend on the terminal (emergency circumstances, disasters, breakdowns, etc.), all contracts, agreements or oral arrangements shall be terminated during the duration of the special conditions. At this time, all costs incurred due to the specific situation will be borne by the customer.

The client also carries all the consequences that result from the disrespect of the legal definitions, provisions and instructions of the terminal.

3.9 Manipulation

Any movement of a container or conventional cargo on a terminal such as loading or unloading into or from a road vehicle is counted as manipulation and is billed to the customer.

3.10 General Definitions

It is considered that the general definitions are known to the party and that the party agrees with them at the time when submitting the written request. General definitions regarding terminal operations are available at the terminal at all times of the working hours.

3.11 Contacts with Clients

All contacts with customers regarding terminal work and services are done through the terminal service manager so that there is no misunderstanding or guidance or misleading information about the customers. Any contact or misrepresentation of information by the terminal employees will be subject to liability. Terminal employees can only provide information about the work they are assigned to perform.

Customers contact on all matters about the terminal can be made at the following address:

INFRAKOS
Mr. Sabit Thaqi
Traffic Department
Fushë Kosovë
Tel. +383 38 550 550 132
Mob. +383 44 222 137
e-mail: sabit.thaqi@kosovorailway.com



4. Access Charges for Freight Terminal in Miradi

4.1 Legal Framework

According to the Law on Railways (Article 61), the Infrastructure Manager of Kosovo Railways JSC - INFRAKOS determines the level of payments for infrastructure utilization according to the market situation based on the principles of non-discrimination

4.2 Principles of the Tariffs Setting

Basically, the value of the tariffs for the use of Terminal Infrastructure is determined on the basis of real costs and service delivery as defined in point 3.1 of this document.

INFRAKOS makes the determination of tariff policies based on justice and non-discrimination as stated in Article 61 of the Law on Railways.

The level of payments for the use of the terminal services at Miradi is defined depending on the services provided and the volume of works performed.

4.3 Tariffs Changes

INFRAKOS analyzes in detail the market situation in the transport sector and other economic sectors of Kosovo and the region in order to offer market-oriented tariffs or tariffs that promote rail transport. Any proposal for changes to the tariff system is welcomed and will be treated according to the consultation procedure that is included in the Railway Law and other applicable regulations.

4.4 Invoicing

All payments must be made according to the instructions and regulations of the existing freight terminal, for which customers receive the respective invoices.

4.5 Price list for services offered at the terminal

In the following table are presented the tariffs for all services that are in effect at the Miradi Freight Terminal:

Tab. 1 – Service tariffs offered at the Miradi Terminal

Nr.	The type of terminal services	Price in Euro
1	The price for a crane manipulation	20
2	The price for a crane manipulation with rope (cable)	40
3	Mechanical forklift price for one hour	20
4	The price of a hand-forklift for one hour	10
5	Price of the connection to the electricity of containers (refrigerators) for one hour	3
6	Price of manipulation with forklift of pallets up to 1020 kg	1
7	Price of manipulation with forklift of pallets up to 2020 kg	2
8	Price of manipulation with forklift of pallets up to 3020 kg	3
9	Price of manipulation with forklift of pallets over 3020 kg	4
10	Price of the stay for goods and heavy equipment for all types over 24 hours (for each additional day)	20
11	Price of the stay for full-empty containers up to 15 days for each every 24 hours	15
12	Price of the stay for full-empty containers over 15 days for each every 24 hours	20
13	The price of truck entry into the terminal	20

4.6 Calculation of services

The calculation of the services is done on the basis of the Form FT-01 (Terminal Form - 01 - Service Delivery Report), which is supplemented by operating technicians.

FT - 01 is signed by the technicians and is verified by the terminal chief, where he is then handed to the collector for initiating the calculation of the services by completing FT - 02 (Terminal Form - 02 - Service Calculation Report). This form is supplemented by a collector based on FT - 01 and the invoice is prepared if the customer pays in cash or the bill if the customer pays in the bank or under the contract.

FT-03 - Pro invoice is prepared by the collector and applies when the client pays through the bank. Pro-invoice is prepared on the basis of the FT-02 service calculation report. The delivery of the pro invoice is done according to the instruction used by the calculators.

FT - 04 - The report on collection of entrance permits is filled on the basis of the bill collection permits by filling out and attaching a copy of the entrance permits and certifying them to the terminal chief.

FT - 6 - Delivery / Receipt Form between the Freight Transport Operator and the Terminal provides technical conditions for accepting and the delivery of containers.

4.7 Payment Order

The payment order is made in cases when the client pays cash. This payment order at the terminal is completed on the basis of FT-01, where 1 (one) copy is given to the client and two copies remain at the terminal.

All works that are required to be performed by the terminal collector are also entitled to perform the operating technicians or other workers at the terminal only when absent at the workplace and after written authorization by the terminal.

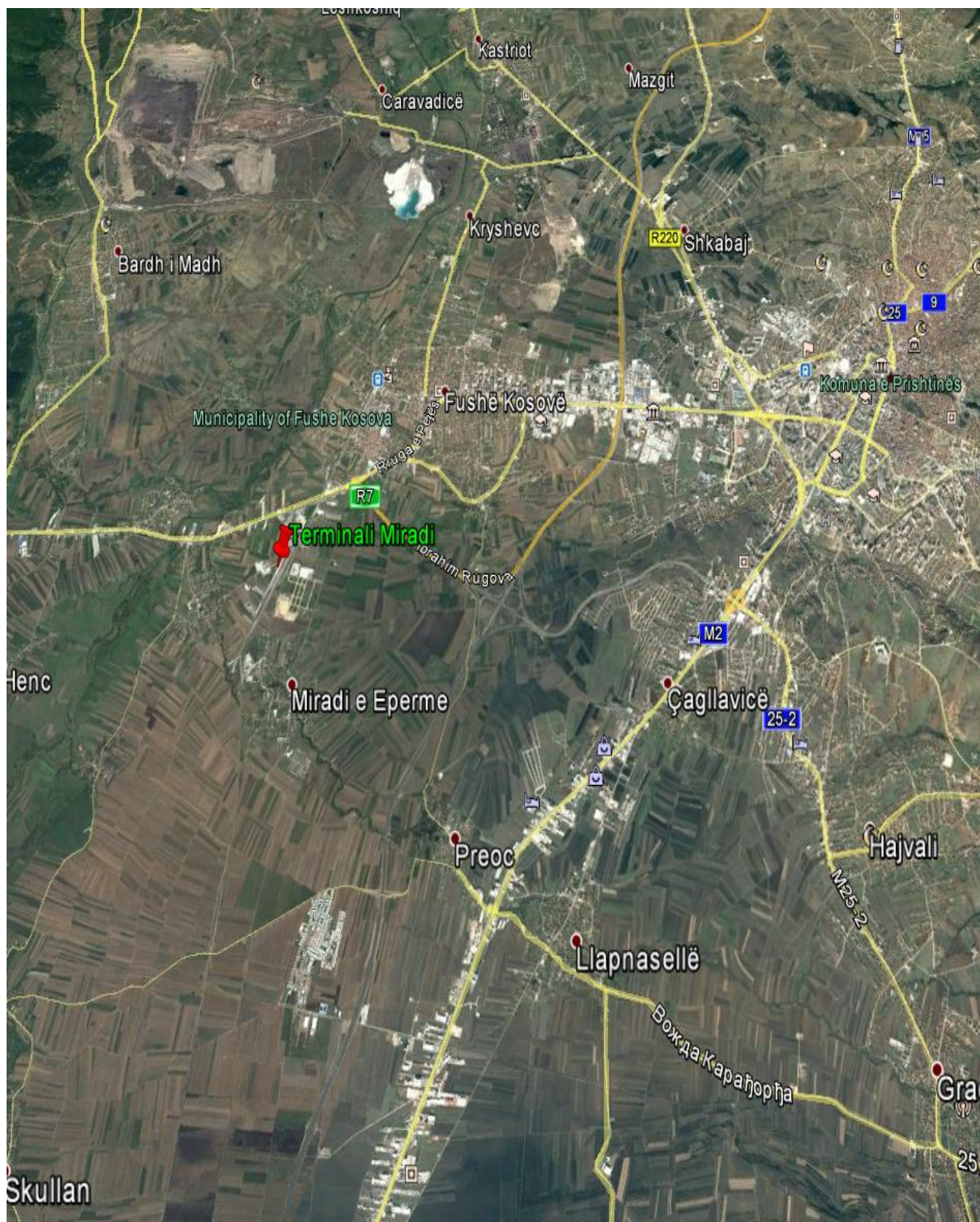
4.5 Value Added Tax (VAT)

All payments (fees) from table no. 1 are without VAT. VAT will be charged during billing according to applicable laws in Kosovo. For all the services that the terminal gives, the VAT should be calculated at the value of 18%.

5. Appendixes

- Appendix no. 1: The map of the freight terminal in Miradi
- Appendix no. 2: Entering passes in Terminal
- Appendix no. 3: Payment order for terminal services
- Appendix no. 4: Pro invoice
- Appendix no. 5: Report F1 on executed services in railway terminal
- Appendix no. 6: Report F4 on collection of the entering passes

Appendix no. 1: The map of the railway freight terminal in Miradi



Appendix no. 2: Entering passes in terminal



No. _____

ENTERING PASS IN TERMINAL

Vehicle plate: _____

Type of vehicle: _____

Date: _____

Time: _____

Price in Euro: _____

Cashier: _____

Appendix no. 3: Payment order for terminal services

Date: _____

INFRAKOS

PAYMENT ORDER Terminal service

Serial no:

Payment in account of invoice:

[illegible]

With letters

Cash desk

Technician

Receiver

PRO – INVOICE

Pro invoice no.

Name: _____
Address: _____
No. of business registration: _____
No. of VAT: _____
Phone number: _____

No. of calculation:

Quantity	Description of goods / services	Price In Euro	Total in Euro
Total amount:			
VAT:			
TOTAL:			

Bank name :	Pro Credit Bank Kosova
SWIFT:	MBKOCS22
Account name:	INFRAKOS
Account number:	1114103681020188
Description:	Reference, client name, number of pro invoice

Client signature: _____ Signature of the INFRAKOS officer: _____

Payment is done: Yes , No

Appendix no. 5: Report F1 on executed services in railway terminal

REPORT F1
ON EXECUTED SERVICES IN THE RAILWAY FREIGHT TERMINAL IN MIRADI

Date: _____

Freight Terminal Miradi
Fushë Kosovë

Receiver of freight: _____

Place: _____

Services payer: _____

Place: _____

No.	Description of the services	Type of freight	Quantity	Weight	Unit	Destination	
						Place	Km
1							
2							
3							
4							
5							
6							
7							
8							
9							
10							
11							
12							
13							
14							
15							

Appendix no. 6: Report F4 on collection of the entering passes

REPORT F 4 ON COLLECTION OF ENTERING PASSES

Serial number: _____

Serial number of block: From: _____ Up to: _____

No.	Serial number	Client	Number of vehicle	Type	Date	Time	Cashier	Number of tickets	Ticket price	Value in Euro
1										
2										
3										
4										
5										
6										
7										
8										
9										
10										
11										
12										
13										
14										
15										
16										
17										
18										
19										
20										
Total:										

In written: _____

Fushë Kosovë

Date: _____